

- > **Port size: 1/4" ... 1" (NPT, ISO G)**
- > **High flow filter/regulator designed for use in corrosive environment**
- > **Applications include marine environment, oil and gas productions**

- > **Metallic parts meet NACE* Standard MR-01-75**

* National Association of Corrosion Engineers – recognised oil-field recommendation for resistance to sulphide stress cracking common in well-head and other corrosive environments



Technical features

Medium:
Compressed air only

Maximum inlet pressure:
31 bar (449 psi) (manual drain)
17 bar (246 psi) (auto drain)

Outlet pressure range:
0,5 ... 10 bar (7 ... 145 psi)

Flow:
40 dm³/s (Port size: 1/4" and 3/8")
75 dm³/s or 100 dm³/s (Port size: 1/2" and 1")

Element:
5, 25 or 40 µm

Port sizes:
1/4 NPT, 3/8 NPT, 1/2 NPT, 3/4 NPT, 1 NPT
G1/4, G3/8, G1/2 others on request
1/4 NPT (gauge) and 1/4 NPT (automatic drain)

Drain:
Manual or automatic
Automatic drain operation

conditions (float operated):
To close: > 0,3 bar (4.35 psi)
To open: < 0,2 bar (2.9 psi)
Minimum air flow required to close 1 dm³/s

Ambient/Media temperature:
FPM seals
-20 ... +80°C (-4 ... +176 °F)
NBR seals
-40 ... +80°C (-40 ... +176 °F)

Air supply must be dry enough to avoid ice formation at temperatures below +2°C (+35 °F).

Materials:
Body, bowl, bonnet, filter element and adjusting screw:
316 stainless steel
Elastomers: FPM or NBR

Technical data, standard model, relieving and panel nut

Symbol	Port size	Outlet pressure *1) (bar)	Element (µm)	Flow *2) (dm³/s)	Drain	Weight (kg)	Model
	1/4 NPT	0,5 ... 10	5	40	Manual	1,61	B52G-2AD-DG1-FMN
	3/8 NPT	0,5 ... 10	5	40	Manual	1,60	B52G-3AD-DG1-FMN
	1/2 NPT	0,5 ... 7	40	100	Manual	2,21	B54G-4AD-DM3-RKN
	1/2 NPT	0,5 ... 10	40	75	Manual	2,21	B54G-4AD-DM3-RMN
	1 NPT	0,5 ... 7	40	100	Manual	2,04	B54G-8AD-DM3-RKN
	1 NPT	0,5 ... 10	40	75	Manual	2,04	B54G-8AD-DM3-RMN
	1/4 NPT	0,5 ... 10	5	40	Automatic	1,74	B52G-2AD-AC1-FMN
	3/8 NPT	0,5 ... 10	5	40	Automatic	1,73	B52G-3AD-AC1-FMN
	1/2 NPT	0,5 ... 7	40	100	Automatic	2,41	B54G-4AD-AC3-RKN
	1/2 NPT	0,5 ... 10	40	75	Automatic	2,41	B54G-4AD-AC3-RMN
	1 NPT	0,5 ... 7	40	100	Automatic	2,24	B54G-8AD-AC3-RKN
	1 NPT	0,5 ... 10	40	75	Automatic	2,24	B54G-8AD-AC3-RMN

*1) Outlet pressure can be adjusted to pressures in excess of, and less than, those specified. Do not use these units to control pressures outside of the specified ranges.

*2) Typical flow with 10 bar inlet pressure, 6,3 bar set pressure and a 1 bar drop from set.

Option selector

B5★G-★★D-★-★-★-★

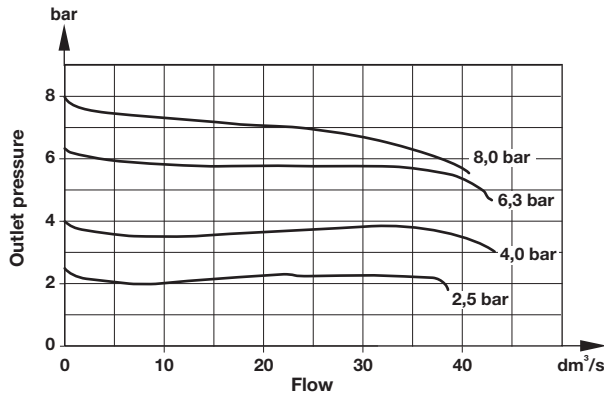
Nominal unit size	Substitute	Bracket/gauge	Substitute
1/4"	2	Non Bracket, Non gauge	N
1/2"	4	Bracket, Non gauge	B
Port thread size	Substitute	Outlet pressure	Substitute
1/4"	2	100 psi: 7 bar	K
3/8"	3	150 psi: 10 bar	M
1/2"	4	Temperature range	Substitute
3/4"	6	-40 ... +80°C (NBR seals)	R
1"	8	-20 ... +80°C (FPM seals)	F
Port thread size*1)	Substitute	Element	Substitute
NPT	A	5 µm	1
ISO G	V	25 µm	2
Adjustment	Substitute	40 µm	3
Hexagon	D	Bowl	Substitute
Drain Type	Substitute	Metal long *2)	C
Automatic, plastic	A	Metal standard *3)	M
Manual, Stainless steel	D	Metal short *4)	G

*1) 1/2" & 1" NPT thread provided only
Other versions: B54G-4AD-TC1-FMN & B54G-4AD-TC3-FMN
automatic inner stainless steel thread filter regulator on request.

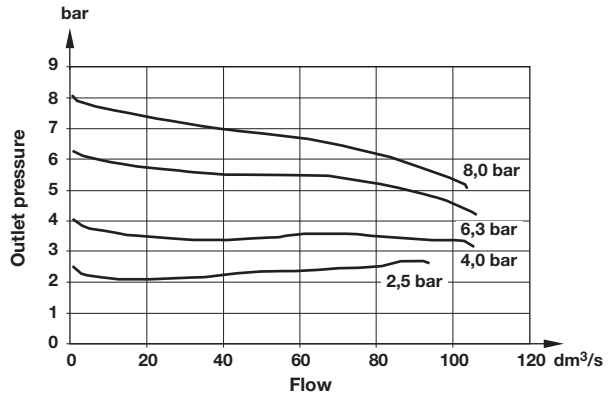
*2) Long Bowl for drain type A
*3) Standard Bowl for B54G manual drain
*4) Short Bowl for B52G manual drain

Flow characteristics

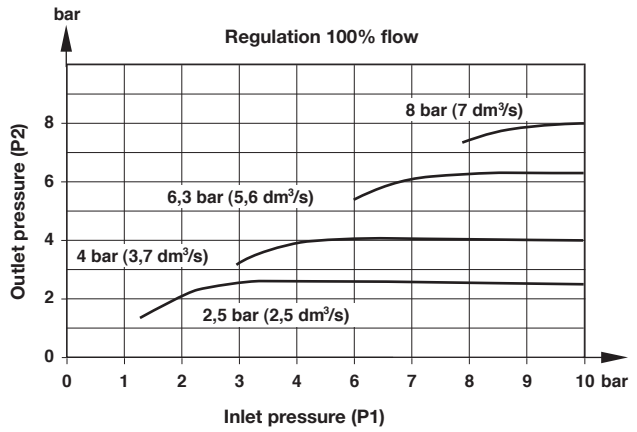
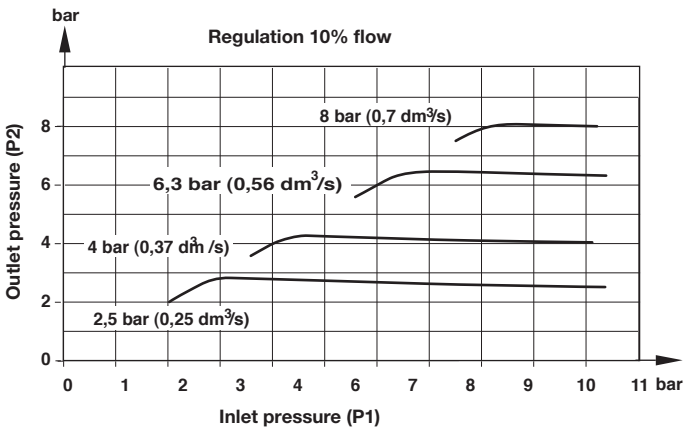
Inlet pressure: 10 bar, filter element: 5 µm, port size: 1/4 NPT



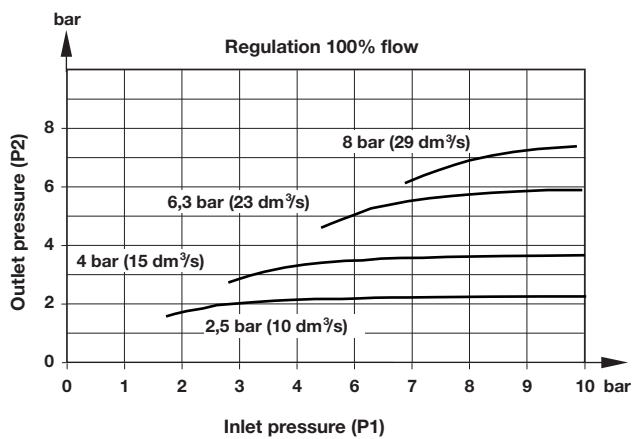
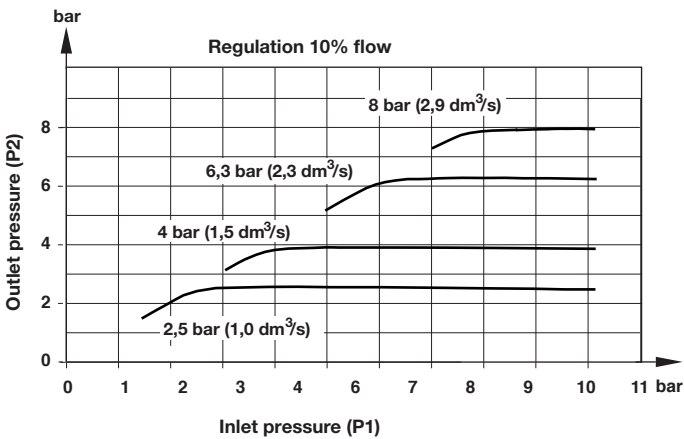
Inlet pressure: 10 bar, filter element: 40µm, port size: 1/2 NPT



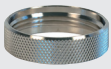
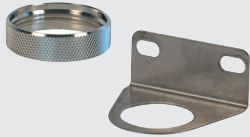


Regulating characteristics (1/4" version)



Regulating characteristics (1/2" version)





Accessories


Panel nut	Neck mounting bracket	Gauge *1)	Plastic adjusting knob
			
5988-02	18-001-973 (includes panel nut)	18-013-913 (0 ... 6 bar, -40 ... 65°C) 18-013-909 (0 ... 10 bar, -40 ... 65°C)	74630-04

*1) Stainless steel items not strictly to NACE standard MR-01-75.

Spare parts

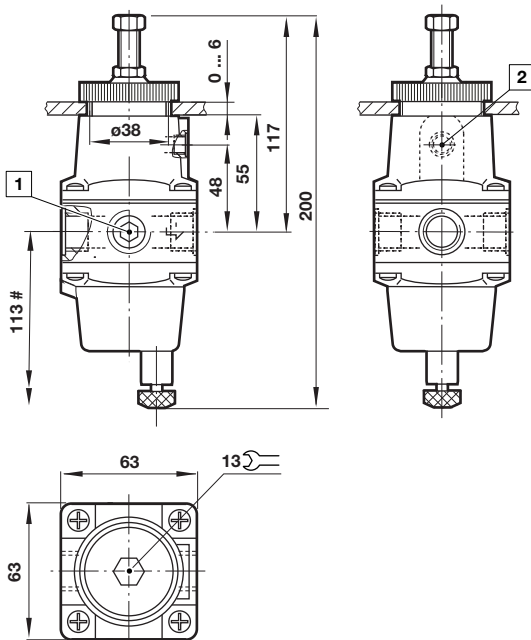
Spare parts	Spare parts
	
Port size: 1/4" & 3/8"	Port size: 1/2" & 1"
A080823-01 (manual drain, FPM)	A1425-S01 (manual drain, FPM)
A080823-03 (manual drain, NBR)	A1425-S02 (manual drain, NBR)
A080823-02 (auto drain, FPM)	A1425-S03 (auto drain, FPM)
A080823-04 (auto drain, NBR)	A1425-S04 (auto drain, NBR)

Filter element

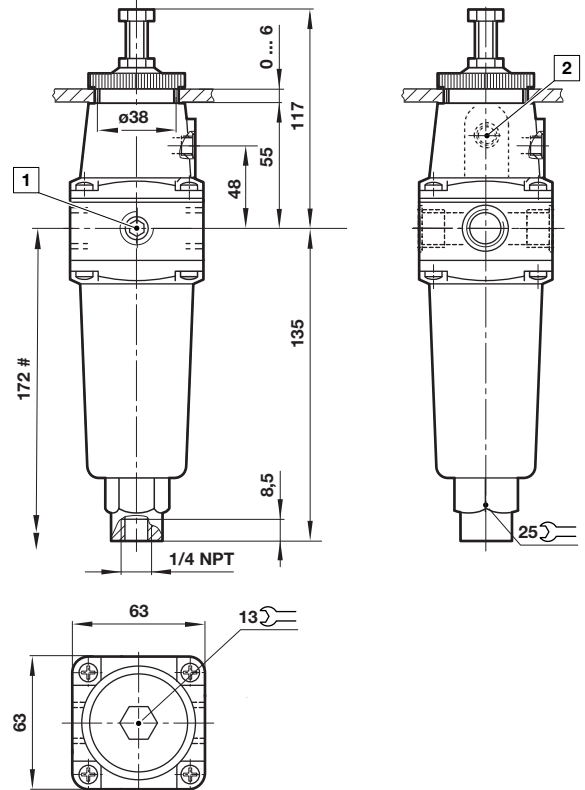
Filter element

5 µm: 5984-01
25 µm: A080874-02
40 µm: A080874-03

Dimensions

Manual drain (B52G)



Auto drain (B52G)



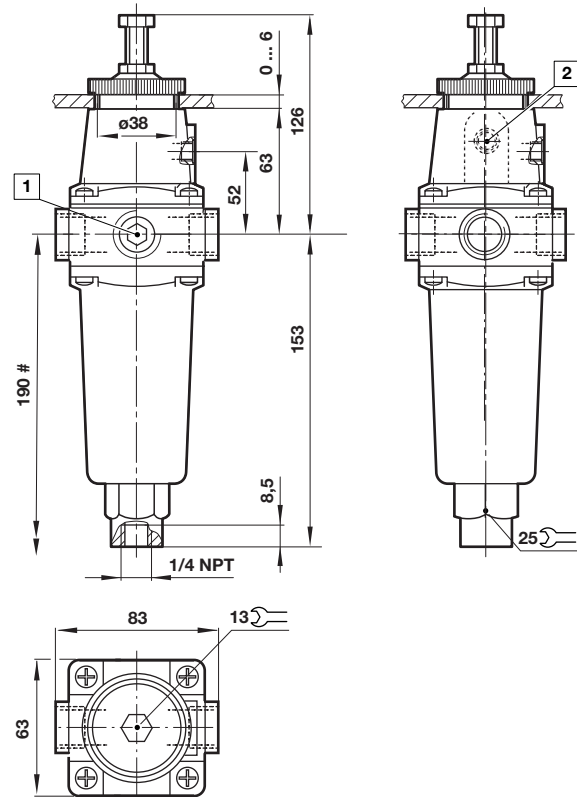
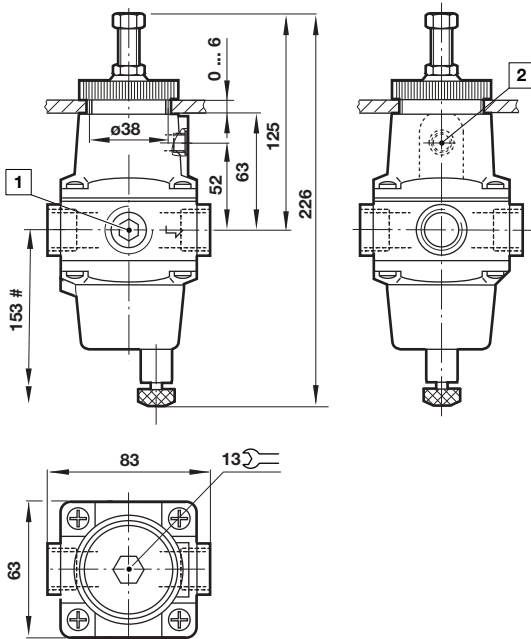
Dimensions in mm
Projection/First angle

- # Minimum clearance required to remove bowl
- 1 1/4 NPT Gauge port
- 2 1/8 NPT Exhaust port

Manual drain (B54G)

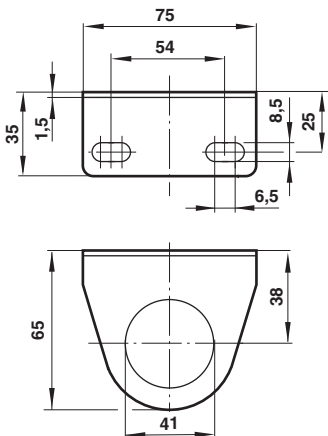
Auto drain (B54G)

Dimensions in mm
 Projection/First angle



- # Minimum clearance required to remove bowl
- 1 1/4 NPT Gauge port
- 2 1/8 NPT Exhaust port

Neck mounting bracket



Warning

These products are intended for use in industrial compressed air systems only. Do not use these products where pressures and temperatures can exceed those listed under »Technical features/data«.

Before using these products with fluids other than those specified, for non-industrial applications, life-support systems or other applications not within published specifications, consult IMI Precision Engineering, Norgren China. Through misuse, age, or malfunction, components used in fluid power systems can fail in various modes.

The system designer is warned to consider the failure modes of all component parts used in fluid power systems and to provide adequate safeguards to prevent personal injury or damage to equipment in the event of such failure.

System designers must provide a warning to end users in the system instructional manual if protection against a failure mode cannot be adequately provided.

System designers and end users are cautioned to review specific warnings found in instruction sheets packed and shipped with these products.